

Information for patients.

Congratulations on receiving your denture with attachments of Swiss-made quality. Years of research and development at our facility in Switzerland have gone into producing these attachments.



Fig. 1

Our primary aim is to develop the smallest possible parts with maximum stability and we have succeeded in doing this, as borne out by satisfied customers around the world as documented in numerous publica-

tions. You will continue to enjoy your new teeth, provided you follow these instructions carefully.

General

The regular examination, repair and periodic maintenance of retaining elements must be carried out exclusively by skilled persons. Only original tools and parts may be used for this work. The mechanical cleaning of retaining elements using toothpaste or other abrasive cleanser may lead to premature wear of the functional parts.

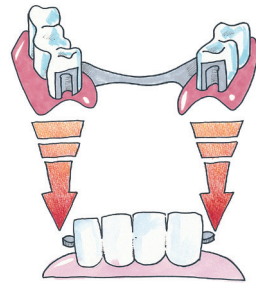


Fig. 2

Insertion and removal of the dentures

Ensure that the dentures do not tilt or rock, as this can lead to damage. Never place dentures by biting the teeth together. This can damage the retaining elements.

Insertion

Hold the denture at both ends, ideally between thumb and forefinger, and place it back in the mouth on the anchors. Search or feel for the correct insertion position and push the denture onto the anchors with gentle, even finger pressure. Once the denture is seated, carefully close your jaws and check whether the denture is in its correct final position. (Fig. 2)

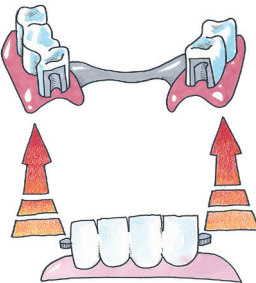


Fig. 3

Removal

Hold the denture at both ends, ideally between thumb and forefinger, and slowly, carefully and steadily pull it off the anchors and remove it from the mouth (Fig. 3).

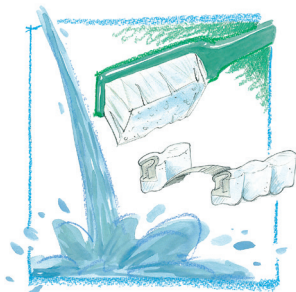


Fig. 4

Cleaning and care

It is best to clean your natural teeth and your dentures after every meal. Cleaning of dentures includes cleaning of the retaining elements. The most gentle cleaning is achieved by cleaning the retaining element under running water using a soft toothbrush. Intensive cleaning is achieved by cleaning the dentures in a small ultrasonic device and adding a suitable cleansing agent. Never clean the precision retaining elements with toothpaste as this could lead to damage or premature wear. Caution should also be exercised in the case of unsuitable cleansing agents or tablets. This could also damage the retaining elements or impair their function.

Only clean the anchor components in the mouth with water and a soft toothbrush as well as an interdental brush. Do not use toothpaste to avoid damage or premature wear. Pay attention to regular cleaning of the anchorage to prevent any inflammation of the soft issue. For information and additional tips on caring for the instruments see www.cmsa.ch/dental

Information for patients.



Fig. 5

Wearing

You should wear your denture at all times, even at night. Exceptions: during medical procedures or operations and if you have severe, painful pressure sores.



Fig. 6

Handling/follow-up

The retaining elements in your dentures are subject to considerable stress in the constantly changing environment of the mouth, and thus are subject to wear over time. Wear is routine and cannot be avoided, only reduced. The amount of wear depends on the overall design of the restoration and not just the design of the retaining elements. We have designed the retaining elements using optimally matched

materials to reduce wear to an absolute minimum.

The fit of dentures on the mucosa (gums) is to be checked at least once per year, and relined if required to prevent tilting movement (overload), especially in the case of free-end prostheses. We recommend checking hybrid prostheses at intervals of three months initially and to replace the retention inserts as necessary.

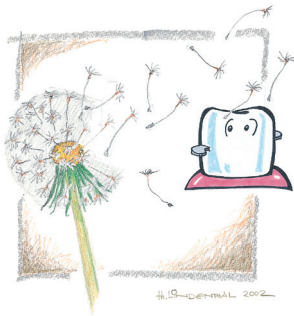


Fig. 7

Warning

Allergies: This product should not be used in patients with known allergies to one or more elements of the attachment materials. This product should only be used in patients with suspected allergy to these materials following allergological testing to exclude an allergy. Ask your dentist which material has been used for your dental attachment. Some instruments used during the installation of the retaining elements

are constructed of stainless steel with may contain nickel.

The device has not been evaluated for safety and compatibility in the MR environment.

Side effects

There are no known side effects when used as intended.



Fig. 8

Medicines

Taking medication normally has no effect on the connecting element. Very rarely, certain substances contained in medicines may impair the functioning of the connecting element.